

September | The Plough Photographic Competition
Friday 7 – Saturday 29 September | Preview Fri 7 Sept, 7pm



This year's categories are: **Devon Buildings; Parks & gardens; Computer enhanced** (e.manipulated in photoshop or similar) Entries are welcome from amateur photographers living in Devon. We are very happy that Mike Southon has agreed to be our judge for a second year. (*How to apply)

October | The Plough Open Drawing Competition
Celebrating 'The Big Draw'



Friday 5 – Saturday 27 October | Preview Fri 5 October, 7pm



Open to artists across The South West
£500 First Prize ; £100 Second Prize & £50 Third Prize
Closing date : Monday 6 August 2012
 Now in It's fourth year, this competition always provides an exceptional and exciting showcase of work from a wide mix of artists from across the region.
 (*How to apply)

November | Stephanie Reiss – Paintings and Woodcarvings
Fri 2 – Sat 24 November | Preview Fri 2 November, 7pm



Stephie Reiss lives and works on the north east edge of Dartmoor where the lichen and moss covered roots and branches provide her inspiration. Her work is built up in layers of texture and pigment, sometimes rubbed back with more layers added imitating the effects of the ravages of the elements. Looking towards the light, fragmented by branches, Stephe sees the survival of trees as a metaphor for the human condition.

December | The Original Gifts Exhibition
Fri 30 November – Thurs 27 December



With over 30 exhibitors of contemporary and traditional crafts and artwork from across the South West, alongside Fair-trade crafts from India and Kenya this festive exhibition will provide inspiration for many a Christmas present and is always a great source of high quality, unique gifts.

Join us for mulled wine and festive cheer at the preview on Friday 30 November at 7pm. (*How to apply)

* Application Forms are available by :
 email: visualarts@theploughartscentre.org.uk
 online at www.theploughartscentre.org.uk
 or from The Plough Box Office 01805 624624

the plough
ARTS CENTRE

9 – 11 Fore Street
 Great Torrington
 Devon EX38 8HQ

Box Office 01805 624624

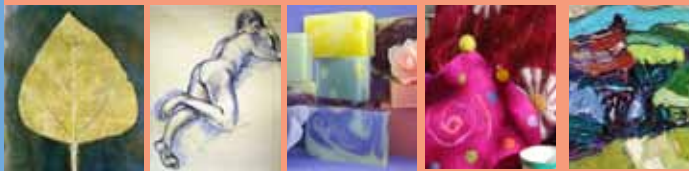
Visual arts enquiries 01805 622552

email: visualarts@theploughartscentre.org.uk

web: www.theploughartscentre.org.uk

Visual Arts Workshops

Here are just a few of the workshops we have on offer. Please check our main Plough programme of events for more details of workshops throughout the year.



Printing - restarts 23 January | Life drawing classes on 5 Feb & 11 March
 Soap making - Fri 3 Feb & Fri 9 March | Felt making - Friday 30 March
 Textured Oil Painting – Fri 20 Jan | Contemporary Embroidery – Sat 3 March
 Painting for Fun - July | Paper Sculpture - August

Artist's Wall in The Plough Café

Alongside the monthly Gallery Exhibitions we have monthly exhibitions on the Artist's Wall in The Plough Café.



Occasionally The Gallery is closed to the public for workshops or meetings. Please call and check before making a special journey.

Opening times: Tuesday to Saturday 10am – 10pm

Admission to The Gallery is free

'art cred': Plough Supporters can make payment for gallery artworks on 6 months credit at 0%

As well as a busy visual arts programme, we have a packed programme of live events and films.

The Plough Café serves coffee and cakes & freshly cooked food all day with an evening menu available from 5:30pm.

Tel: 01805 625925

the plough
ARTS CENTRE

Visual Arts Programme 2012



January | Richard Meyer - The Structured Landscape
Fri 13 - Sat 28 January | Preview Friday 13 January, 7pm

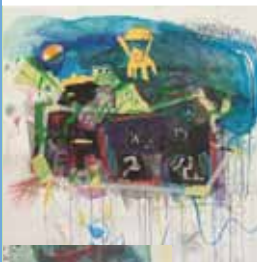


Oil paintings by Devon painter Richard Meyer drawing on the visual impact of man on the countryside.

Little is left which is wild or natural. Some human influences, hedgerows, agriculture, deforestation, moorland and old buildings, are so ancient we like them or scarcely notice them, while developments, new roads, dams, wind turbines etc, are often a shock and are resisted. We are visual beings and ever since the Stone Age painting has been a means of universal communication. Modern landscape painting if it is truthful (and what is the point of Art if it is not?) cannot ignore this. The best combines nature with science creating works which are things of beauty in their own right.

Textured Oil Painting Workshop with Richard on Friday 20 January 10 - 4pm
Please call the Box Office for details.

February | Daniel Bell
Friday 3 – Saturday 25 February | Preview Friday 3 Feb, 7pm



“Yet the fierce memory of freedoms dance will yet prevail” - Mary Grey

The description of art is like a finger pointing to the moon, if you keep your eye on the finger you will miss all the heavenly glory. Daniel's painting attempts to go behind the scenes of the visible and investigate what it means to be a transcendental phenomena portrayed in a visual language.

What we observe in the world around us is what we choose to observe, and our very act of observing brings reality into being. (Quantum theory)

March | School's Exhibition
Friday 2 – Saturday 24 March | Preview Friday 2 March, 7pm



A colourful mixture of artwork from our local primary schools and GCSE work from Great Torrington School.

For More Information call 01805 624624
visualarts@theploughartscentre.org.uk
www.theploughartscentre.org.uk

April | John Wright & Tim Saunders
Fri 30 March – Saturday 28 April | Preview Fri 30 March, 7pm

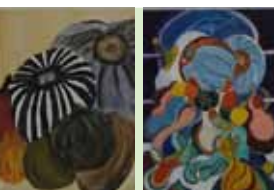


John Wright- 'The work on show results from a long standing interest in the fine details of a landscape, especially the surfaces of floors and walls. These details have been found both locally and in my travels in this country and abroad. After selecting a photograph from which to work, I begin by making an exploratory composition in a sketchbook, developing shapes, selecting colours and creating appropriate textures.'

Tim Saunders - Tim's oil paintings of the North Devon Landscape focus on qualities of light and expressive forms. John's watercolours and drawings however, explore small details of a familiar landscape by finding interest in what may often be overlooked.

Both Tim and John were selected for the 9th North Devon Open Exhibition 2010.

May | 'Art On Friday' Group Show
Friday 4 – Saturday 26 May | Preview Friday 4 May, 7pm



This is the 7th exhibition of the Art on Friday group is to be held at the Plough. This informal, social group meet at the Plough twice a month and explore the use of different mediums with the help of members and outside tutors. New members are always welcome.

June | Grizel & Jay Luttman- Johnson
Thicker than Water
Friday 1 – Sat 24 June | Preview Friday 1 June, 7pm



Two sisters living locally and seeming to draw from the same bottomless well of imagining.

A beautifully crafted exhibition, profound and playful, including linocuts, handmade books, fantastical buildings, marbling, monoprints and poems.

June/July | 3D design work from Great Torrington School
Tuesday 26 June – Saturday 8 July



A collection of work from the Design Department at Great Torrington School, showcasing work from KS3 and KS4 students

July | Anna Georghiou & Phil Bird
Fri 13 July – Sat 4 August | Preview Fri 13 July, 7pm



Anna Georghiou Her paintings depict groups of figures in a timeless setting, offering viewers alternative possible worlds, questioning reality and embracing the creative imagination. 'Honesty in art is important to me, art need not shock or follow superficial trends. In an age of cynicism I wish to affirm the enduring qualities of the human spirit and attempt to reignite the search for the Logos' (the soul)

Phil Bird - Imaginary Constellations Series
 This is an ongoing series of small oils on canvas 20 x 20 cms 'After many years working on a larger scale, I felt the creative pulse changing. Now I have come to delight in this almost miniature way of working, I love the Intensity and focused imagery that this way of painting brings to me.'

Anna & Phil will be running a 'Painting for Fun' Workshop in July.
Please contact the Box Office for details.

August | Polly Verity
Paper Sculpture (Postponed from last year)
Fri 10 August – Sat 1 September | Preview Fri 10 Aug, 7pm



This exhibition shows paper in different lights, from sharply creased geometric folds, to a more ethereal, sculptural working of the paper. Score a sheet of paper and fold sharply along that score. This was the starting point. Since then Polly has taken this simple premise in many directions from simple straight line repeat folds to more complicated folds such as fractals and folded curves.

These geometric, folded patterns form the backdrop to Polly's miniature paper and wire creatures.

Polly will be running two Paper Sculpture Workshops in August one for adults and one for children. Please contact the Box Office for details.